

## BRIGHTSPHERE Solutions WLL

### OVERVIEW

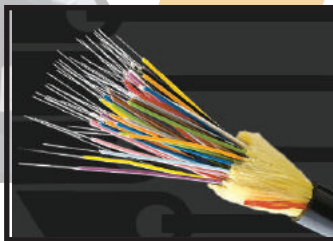
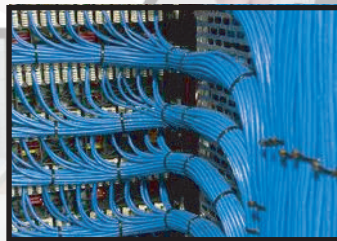
**BRIGHTSPHERE** is a leading professional **IT/ICT Solutions Provider** and **Systems Integrator** based out of Doha since March 2012 and operating in the UAE since September 2007. Our knowledge base and experience extends across virtually every market segment. We offer effective and complete turnkey IT/ICT Solutions and Services, which are the reflection of both our ideas to ensure your requirements are fully covered and is our first priority.

At **BRIGHTSPHERE** Solutions, we pride ourselves in dealing with our clients in a professional manner, thereby winning their full respect and confidence in our ability to deliver, so they can continue focusing on their day-to-day business whilst their project is handed over to us to execute. We are a '**one-stop-solution**' for all your IT/ICT requirements.

"We take great care and ensure accessibility and availability, services round the clock (our logo represents 25/8 depicting our commitment over 24 hours and more than 7 days a week). Every customer is facing concerns over discontinued services and response, where we would like to be there when our customers actually need us the most, all round the year. We take the headache for you for all your needs, at all times!"

### OUR SERVICES

- 1. Structured Voice and Data Cabling Solutions** - We evaluate, design, supply and install an appropriate cabling requirement to connect voice and data across your business LAN. Our structured cabling infrastructure shall guarantee optimum uptime, performance, flexibility, expandability and longevity. Our teams have the experience, specialization, expertise and knowledge of installations of high standards with bare minimum interruption and downtime to your existing systems in place.



- 2. Networking Solutions** - We offer a comprehensive range of specialized networking services and technical solutions at a reasonable cost. The design to implementation of a network environment depends on the expertise of our skilled engineers and technicians to offer you quick professional solutions and services.



- 3. Security & Surveillance Solutions** - **BRIGHTSPHERE** can supply, install and support a complete range of quality CCTV systems for your surveillance and monitoring requirements, including Analog and IP based cameras (approved by MOI) and as per the new MOI Regulations for both Commercial and Residential Towers, Villa Compounds, Banks, Schools, Hospitals, Malls, etc. So, whatever your security surveillance requirements, **BRIGHTSPHERE** has the capability to offer the highest levels of performance, quality and support, all at a cost effective and competitive pricing.

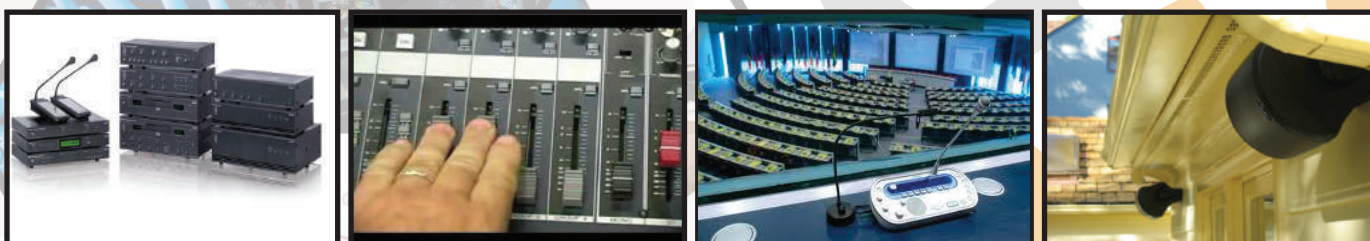




- 4. Security Access Control Solutions - BRIGHTSPHERE** can secure your organization and critical access problems with complete range of Access control devices like PIN based, proximity, biometric and face recognition, for large number of users. We offer a good deal of options for the security access management system required by the business environments today. From the single door system to multi-user, multi-site LAN/WAN connected, integrated safety and card entrance control system with PIN, Proximity Card, Fingerprint or Face Recognition, or combination of all.



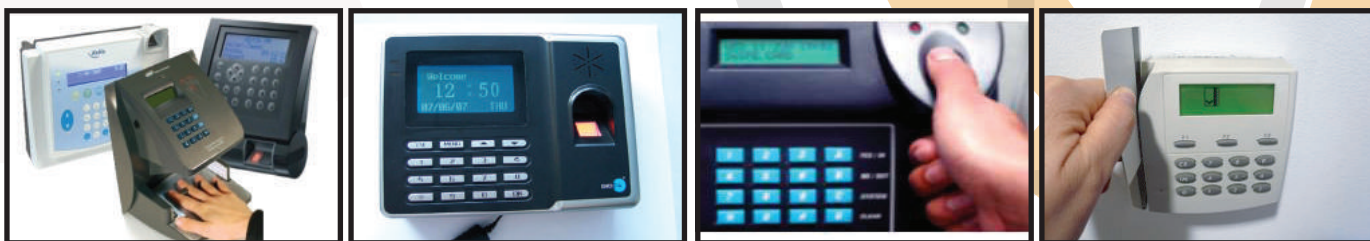
- 5. Public Address System - BRIGHTSPHERE** offers a wide range of contemporary Public Address Systems, which have crystal clear sound and are also known for their reliability and durability. These Public Address Systems are available in lightweight and meet the client's standards. We have installed quality sound systems in mosques, auditoriums, conference halls, malls and schools, etc. We provide complete design, system and installation for all sizes of Professional Sound Systems, no matter what your requirements.



- 6. PABX, Boardroom & Conference Room Solutions -** We provide all kinds of Analogue and IP based PABX, Boardroom, Conference Hall and Classroom solutions like projectors, screens, tele-conferencing and video-conferencing solutions, both wired and wireless.



- 7. Time and Attendance Solutions -** We provide comprehensive range of Fingerprint Time Attendance system that is designed with high technology sensors. Time & Attendance System protects a company from payroll fraud and provides both employer and employees with confidence in the accuracy of their wage payments. We supply and install both Proximity and Fingerprint based Time and Attendance Systems.

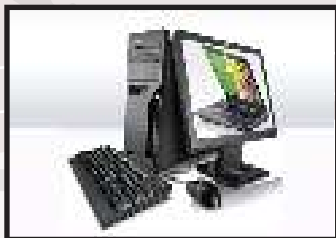


- 8. Storage & Back-Up Solutions -** Data is vital and so are your storage and back-up requirements, which we at **BRIGHTSPHERE** consider as the backbone of your business existence. This covers your business storage, data and power back-up solutions integrated between our reliable partner vendors to ensure 100% uptime and data availability at all times.





**9. Business Hardware and Software Solutions** - We also supply and install branded Workstations, Desktops, Laptops, Servers, Printers, Scanners, etc., and also assembled units based on specific needs and are partnered with the leading technology vendors to provide you the best turnkey solutions ever. Competitively priced, we can supply and install hardware either as a day to day business purchases or as part of a project, packaged with software and professional services, delivering added value to our customers time and again.



**10. Electronic Article Surveillance Solutions** - Electronic Article Surveillance (EAS) is a kind of electronic anti-shoplifting (anti-theft) system that can decrease shoplifting when retailing enterprises implement open-shelf sale, to increase sales and profit. EAS system consists of **electronic sensors, deactivator system and label or tag**. BrightSphere Solutions has the experience, expertise and products necessary to supply, install and service a highly-effective theft prevention system for your enterprise. Maintaining and servicing your existing system can be carried out by **BRIGHTSPHERE**.



**11. POS, Bar Code & Labeling Solutions** – We cater to most of your POS, Bar Code and Labeling requirements at ease with great brands as our partners to supply and install as per your needs, and if need be tailor-made to suite your individual requirements.



**12. Fire Alarm Systems** - **BRIGHTSPHERE** can supply and install corporate and commercial fire alarm design and systems. Our Fire Alarm System is an active fire protection system, which detects heat, smoke, fire or the effects of fire. Our ranges of Fire Alarm Systems are supplied as per the needs and requirements of clients at industry leading prices, of course as per the guidelines from Civil Defence under MOI. Our comprehensive fire protection range includes intelligent heat and smoke detectors, sounders, manual call points and control panels, etc.



**BRIGHTSPHERE Solutions WLL**

[www.brightsphere.com.qa](http://www.brightsphere.com.qa)

**BRIGHTSPHERE**

*discipline, speed & growth...*

25/8



## **MISSION AND VISION**

**BRIGHTSPHERE** Solutions is associated and partnered with the leading local and multinational brands and vendors in integrating and providing the right end-to-end solution, in order for the customer to compete in this ever changing global market. With our deep technology expertise and industry knowledge, we are focused on business technology that empowers progress.

Our experienced team of managers, engineers and technicians, coupled with our reliable network of vendors, help us deliver our promise of customer satisfaction. A unification of our expertise, dedication and discipline in managing the projects enable us to execute projects on time, with high quality, efficiently and within budgets.

### **Our Mission**

To utilize our knowledge, experience and expertise in providing the best end-to-end Solutions and Services to our customers with high level of discipline, quality and professionalism, with a personal touch and believing strongly in word of mouth marketing by remaining committed to our customers and their needs. End of the day, **our success is based on your success!**

### **Our Vision**

To become a globally preferred partner in the corporate IT/ICT world for providing cost effective, turnkey, innovative, comprehensive and flexible IT Solutions and Services with quality, commitment, prompt delivery, safety, security, stability and a long term client relationship. Discipline, speed & growth....

## **PRINCIPLES**

### **Commitment and Quality**

In accordance to our Quality Policy, **BRIGHTSPHERE** offers 100% commitments to high quality, timely delivery and customer delight. Discipline, Speed & Growth... always goes along with us being our slogan and 25/8 is our commitment guarantee!!!

### **Professionalism**

With **BRIGHTSPHERE**, you can rest assured that you are dealing with a group of highly professional experts. We also form our team carefully to ensure that people at all levels share our passion for customer satisfaction.

### **Safety with Aesthetics**

Your safety is paramount to us. We ensure that 'looks' do not compromise safety. With **BRIGHTSPHERE** Solutions, aesthetics and safety go hand in hand, complementing each other at all times.

### **Customer Satisfaction**

We strongly believe in the adage that the customer is the king. We also believe that happy customers are our passage to continued long term success and future business.

### **Employee Empowerment**

Our carefully chosen staff is trained to understand customer requirements quickly, empowered to make strategic decisions, and given a mandate to deliver quality, time and again.

برايتسفير سولوشن

**BRIGHTSPHERE** Solutions WLL, CR No. 54852, P O Box 39213, Doha, Qatar

Phone: +974 4427 5397 | Fax: +974 4427 5397 | Email: [info@brightsphere.com.qa](mailto:info@brightsphere.com.qa) | Website: [www.brightsphere.com.qa](http://www.brightsphere.com.qa)